

Bluetooth Contact Transfer for Brew and Basic Phones

TRANSFERRING VIA BLUETOOTH (PREFERRED METHOD)

- Pair the Brew phone with the Basic phone via Bluetooth
- Send all contacts from Brew phone to Basic phone
- Import all the vCard files

PAIRING THE PHONES VIA BLUETOOTH

Basic Phone: DuraXV LTE, Cadence LTE

→

→

- Select Menu
- Select Tools & Settings
- Select Settings
- Select Wireless & Networks
- Select Bluetooth

- Select Bluetooth
- Select On

Brew Phone: DuraXV+

→

→

- Select Menu
- Select Settings & Tools
- Select Bluetooth Menu

- Select Turn On

- Select Add New Device
- Select the device
- Select Pair

SENDING ALL CONTACTS FROM BREW PHONE TO BASIC PHONE

→

→

→

→

→

→

- Select Contacts
- Scroll down to first contact
- Select Options

- Select Send Name Card

- Select Send via Bluetooth

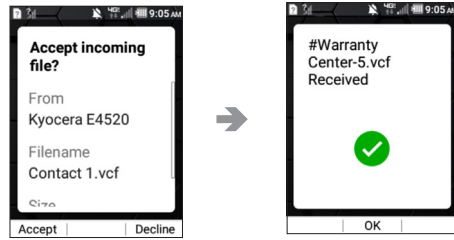
- Select Options

- Select Mark All
- Select Done

- Select device



ACCEPTING THE INCOMING FILES ON BASIC PHONE



- Select Accept

You have successfully transferred all contacts from the Brew Phone to the Basic Phone. Now, let's import the files into the Contact book.

IMPORTING ALL THE VCARD FILES ON BASIC PHONE



- Select Contacts
- Select Options

- Select Import/export

- Select Import from Phone

- Select Import all vCard files